

Project to Open Up the Future

7 Noetsu Expressway

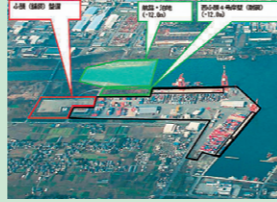
Noetsu Expressway cuts across the Noto Peninsula, connecting tourist spots scattered around the area, as well as linking the Hokuriku Expressway, the Tokai Hokuriku Expressway, Noto Airport and Nanao Port. The Noto Peninsula features a wide range of attractions, such as a beautiful and rich natural environment, a variety of tourism resources, and bounty from the ocean, and is well known for its traditional handicrafts, including Wajima lacquer ware. It is also known for the kind nature of the local people, as in the saying "Noto is kind, even the earth." It is expected that the completion of this expressway will bring about further revitalization of both tourism and the industries of the Noto area through an increase in the nonresident population of this area.



Noetsu Expressway

9 International Maritime Container Terminal Development Project

Niigata Port, the only international hub port along the Japan Sea coast, has experienced consistent difficulties in controlling waiting ships due to the recent increase in freight transport volume with foreign containers. This terminal development project, approved in 2009, was originally planned to solve the above problem and securing the function of container cargo handling in the case of earthquakes. Through this project, it is expected that container logistics will be greatly improved upon, resulting in the provision of additional security and safety for the surrounding areas.



West Pier, East Port District, Niigata Port

10 Nihonkai Engan Tohoku Expressway

This expressway stretches between Niigata City and Aomori City, via Tsuruoka City, Sakata City and Akita City. The Shonai area of Yamagata Prefecture is rich in natural and tourism resources, and famous as the location for the movie "Okuribito." When this expressway is completed, there will be an increase in the number of nonresidents flowing into this area. The result of this should see revitalization of the surrounding local areas, through further tourism promotion and expansion of sales routes for local products, such as "Tsu yahime," a new rice brand from Yamagata Prefecture. (Scheduled to open in 2011)



Approx. 26 km between Atsumi and Tsuruoka

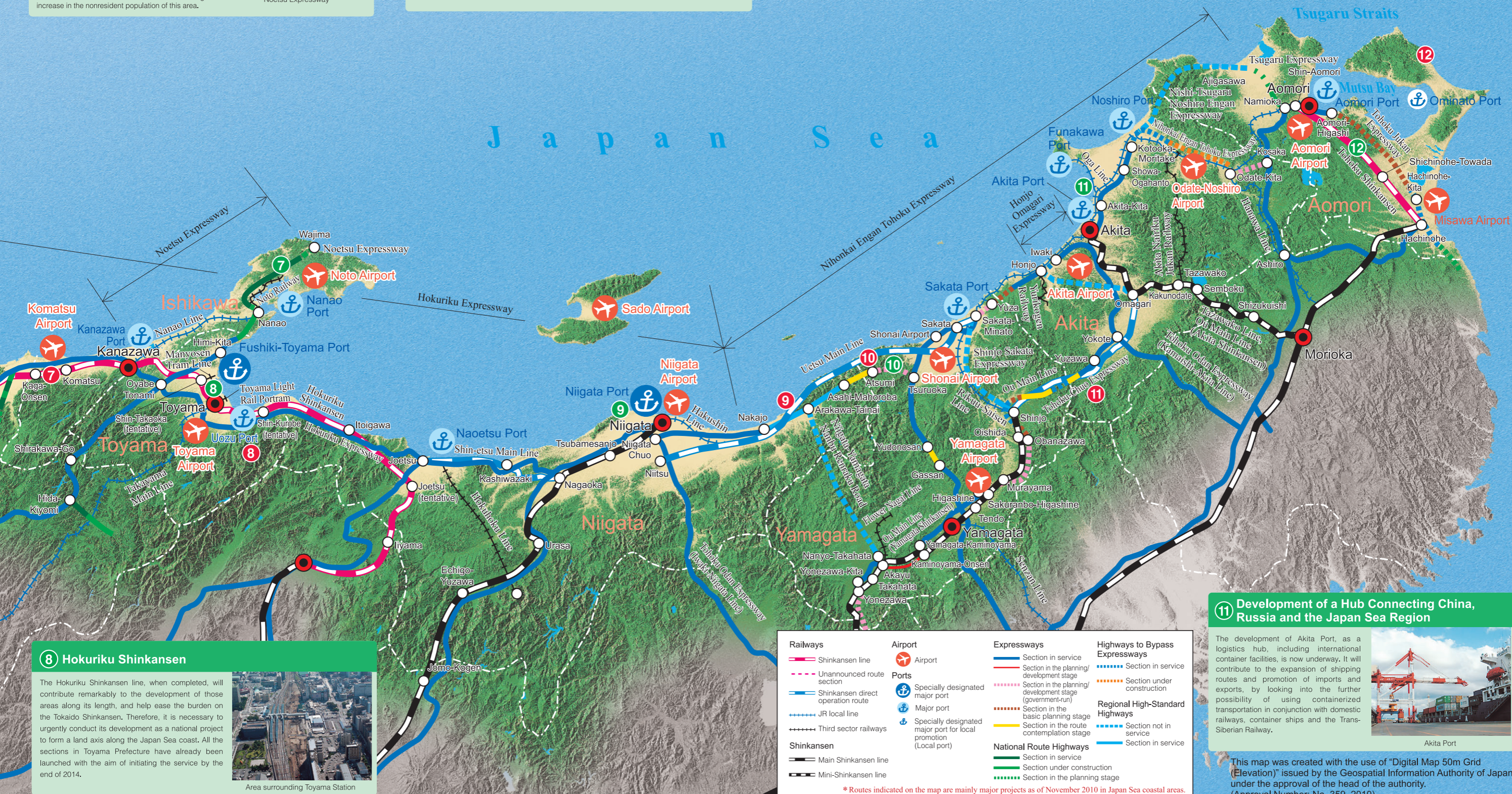
12 Tohoku Shinkansen (Hachinohe - Shin-Aomori)

This Shinkansen line was opened for services on December 4, 2010. The total length of the route stretches over approximately 82 km, taking in Hachinohe Station, Shichinohe-Towada Station and Shin-Aomori Station. The service connects Tokyo and Shin-Aomori by as little as 3 hours and 20 minutes.

*The new E5 Series will be introduced in March 2011, which will further reduce the time to approximately 3 hours and 5 minutes by the end of 2012.



Shin-Aomori Station



8 Hokuriku Shinkansen

The Hokuriku Shinkansen line, when completed, will contribute remarkably to the development of those areas along its length, and help ease the burden on the Tokaido Shinkansen. Therefore, it is necessary to urgently conduct its development as a national project to form a land axis along the Japan Sea coast. All the sections in Toyama Prefecture have already been launched with the aim of initiating the service by the end of 2014.



Area surrounding Toyama Station

11 Development of a Hub Connecting China, Russia and the Japan Sea Region

The development of Akita Port, as a logistics hub, including international container facilities, is now underway. It will contribute to the expansion of shipping routes and promotion of imports and exports, by looking into the further possibility of using containerized transportation in conjunction with domestic railways, container ships and the Trans-Siberian Railway.



Akita Port

Railways Shinkansen line Unannounced route section Shinkansen direct operation route JR local line Third sector railways Shinkansen Main Shinkansen line Mini-Shinkansen line	Airport Airport Ports Specially designated major port Major port Specially designated major port for local promotion (Local port)	Expressways Section in service Section in the planning/development stage Section in the planning/development stage (government-run) Section in the basic planning stage Section in the route contemplation stage National Route Highways Section in service Section under construction Section in the planning stage	Highways to Bypass Expressways Section in service Section under construction Section not in service Regional High-Standard Highways Section in service Section not in service Section in service
---	--	---	---

*Routes indicated on the map are mainly major projects as of November 2010 in Japan Sea coastal areas.

This map was created with the use of "Digital Map 50m Grid (Elevation)" issued by the Geospatial Information Authority of Japan under the approval of the head of the authority. (Approval Number: No. 359, 2010)